



REVIVAL PRO

— EV CHARGER DISCHARGER
12V-32A

Android / iOS Mobile App User's Guide

Table of contents

	Page No.
1. Introduction	
1.1 What is the GenusRevivalPro mobile app?	1
1.2 Which devices does the mobile app support?	1
1.3 How does it work?	1
2. How to install GenusRevivalPro mobile app?	1
3. How to connect the GenusRevivalPro app via Wi-Fi?	1-3
4. Explain Revival - PRO Dashboard function in detail?	4-7
5. How to view (and download) the last 10 reports?	7
6. What details are in the generated Report?	7-8
7. How to change the language?	8

1. Introduction

1.1 What is the GenusRevivalPro mobile app?

The GenusRevivalPro app, designed for Android and iOS, displays real-time battery test parameters. Users can input battery details and receive test results in PDF format through the app.

1.2 Which devices does the GenusRevivalPro app support?

GenusRevivalPro can be installed on Android devices with version 9 or later.

GenusRevivalPro can be installed on iOS devices with version 13 or later.

1.3 How does the GenusRevivalPro app work?

The GenusRevivalPro app links to the RevivalPro Charger Discharger through Wi-Fi, providing comprehensive information on the main dashboard and generating test reports.

Note: This app is exclusively compatible with the GenusRevivalPro charger & discharger.

2. How to install the GenusRevivalPro mobile app?

To install GenusRevivalPro on your **Android phone**:

- I. Open the Play Store
- II. Search for "GenusRevivalPro"
- III. Select it from the results
- IV. Follow the provided instructions.

To install GenusRevivalPro on your **iOS phone**:

- I. Open the **App Store** app.
- II. Find the **GenusRevivalPro** app using the Search tab.
- III. Once you've found the app you want to download, tap **Get** to the right of the app.
- IV. **Confirm the installation** by entering your passcode or using Touch ID and confirm the installation.
- V. Now, the app will begin installing on your iPhone. You'll see a small status circle to the right of the app in the App Store.
- VI. Once the app has finished installing, it will show up on the Home screen of your iPhone.

3. How to connect the GenusRevivalPro app via Wi-Fi?

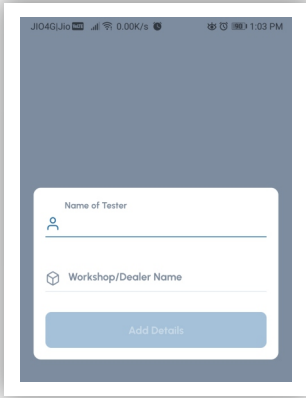
3.1 Connect the battery and power the RevivalPro charger-discharger.

3.2 Open the GenusRevivalPro app on your phone.

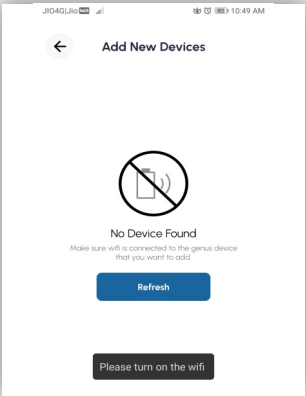
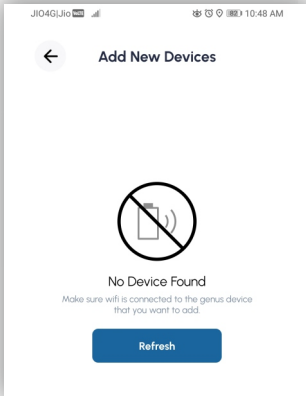


GenusRevivalPro

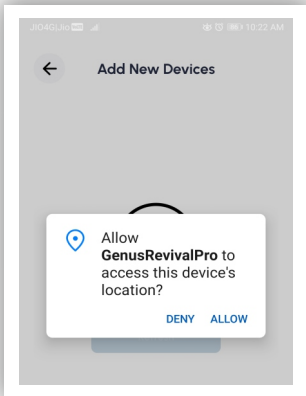
3.3 Enter the tester and workshop/dealer name in the app, then tap Add Details (required only for the first use).



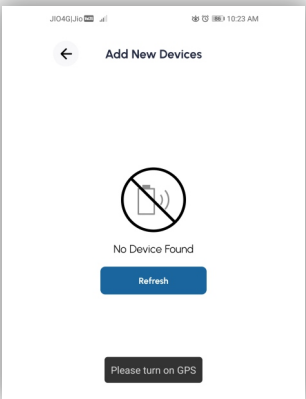
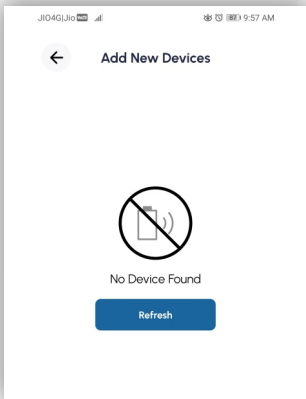
3.4 Tap Add New Devices, then Refresh. Turn on Wi-Fi, turn off mobile data, and return to the app.



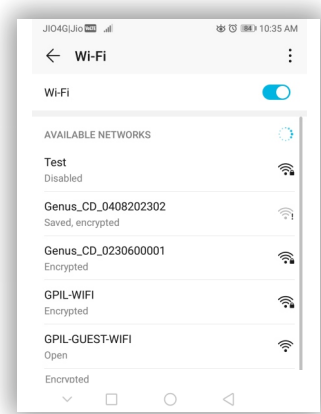
3.5 Tap Refresh again. Allow location access and refresh once more.



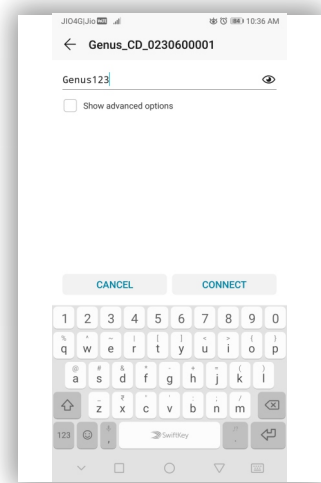
3.6 The display prompts to turn on GPS, enable it in mobile settings.



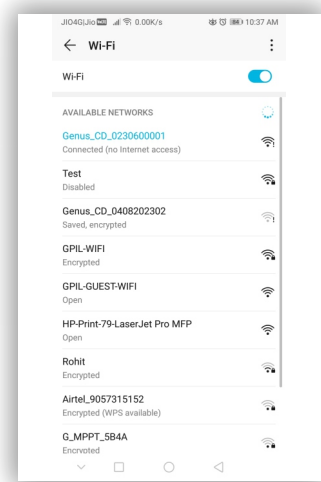
3.7 Locate and connect to the Wi-Fi network named Genus_CD_xxxxxx (where xxxxx is the product's serial number).



3.8 Enter the password "Genus123" and tap Connect.

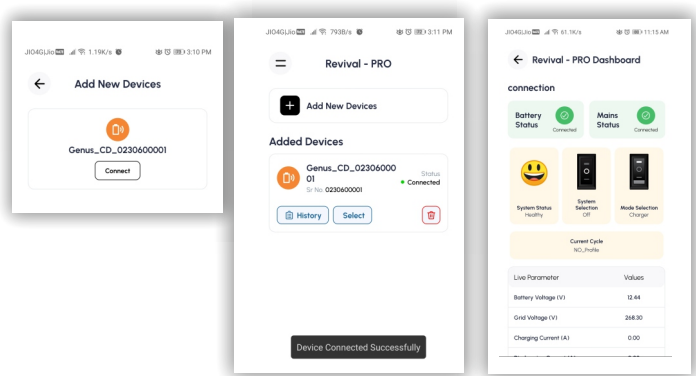


3.9 Once connected, return to the GenusRevivalPro app.



3.10 View the connected device's name on the display, tap Connect, and confirm the successful connection. The RevivalPro page opens, displaying the connected device's status in the added devices list.

- Access the dashboard page by tapping the select tab to check the current device status.



4. Explain the RevivalPRO Dashboard function in detail.

The Dashboard displays the system's current status, allowing users to input details for the active profile. Here are brief descriptions of each section.

Battery Status:

Connected on the dashboard if the battery is connected, otherwise "Disconnected."

Mains Status:

Connected on the dashboard if the AC grid supply is connected, otherwise "Disconnected."

System Status:

Healthy if the system is in good condition.

Battery NA & DC Fuse trip if the DC fuse is burnt or the battery is disconnected during charging or discharging.

Battery Charged if the battery is charged.

Battery Discharged if the battery is discharged.

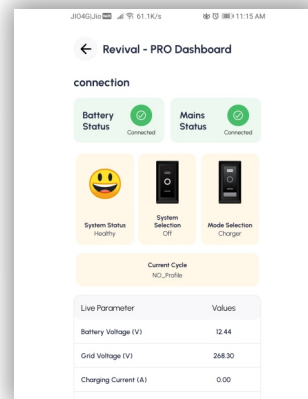
Current Cycle:

NO Profile if the system selection switch is in the OFF state.

Charger cycle 1 for battery charging.

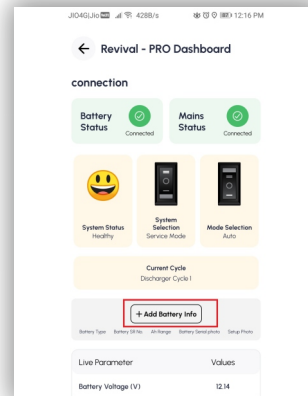
Discharger cycle 1 for battery discharging.

In Auto mode, up to 2 cycles for charging and discharging.



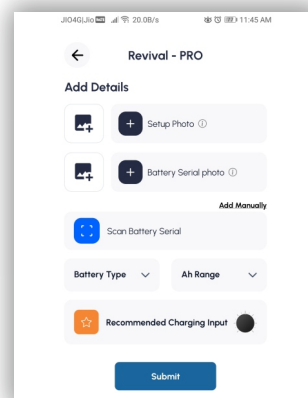
+Add Battery Info:

- Accessible in Service or Customer mode.
- Tap "+Add Battery Info" for details.
- Navigate to the Add Details page.
- Enter the required details.



Setup Photo:

- Tap Setup photo.
- Allow photo capture in the GenusRevivalPro app.
- Capture a photo, and tap Yes to save.

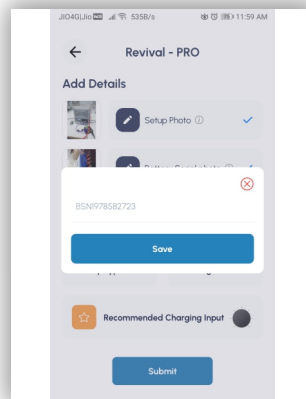


Battery Serial Photo:

- Click on the battery serial photo.
- Capture photo, tap Yes to save.

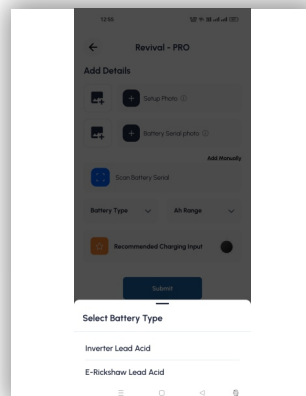
Scan Battery Serial:

- Tap Scan Battery Serial for bar-code and QR code scan.
- Alternatively, choose Add manually.
- Enter the serial number (up to 15 digits), and tap Save.



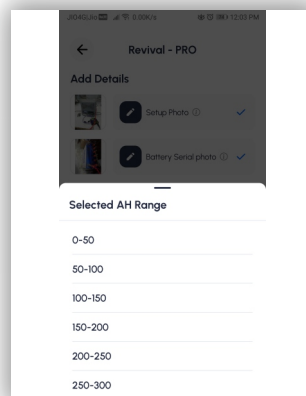
Battery Type:

- Choose the battery type from the provided options (e.g., Inverter Lead Acid).



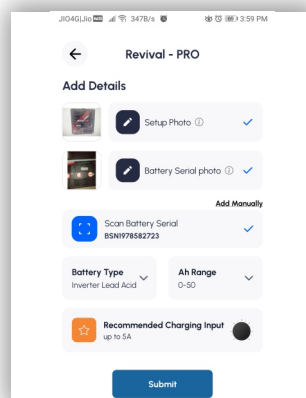
AhRange

- Select the battery range (e.g., 0-50 Ah) and view the recommended charging current.



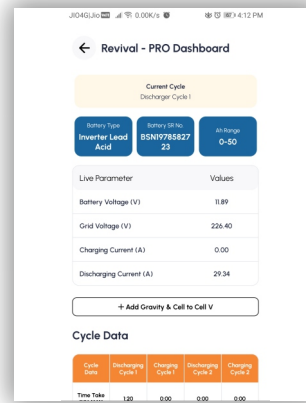
Submit:

- Tap "Submit" to add information, receive a "Details added successfully" message.
- The dashboard displays Battery Type, Battery Serial Number, and Ah Range. The +Add Battery Info option is replaced.



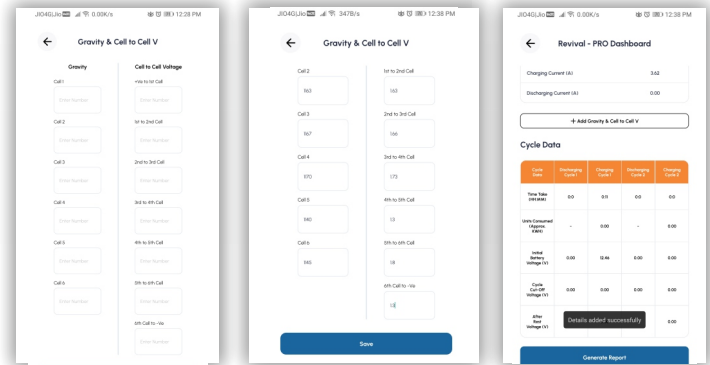
Live Parameter:

- Monitor real-time values (battery voltage, grid voltage, charging current and discharging current).



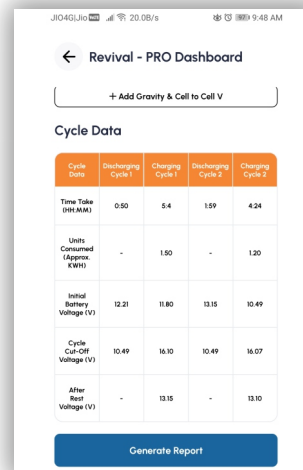
+Add Gravity & Cell to Cell V:

- Access +Add Gravity and Cell to Cell V page, input gravity, and cell-to-cell voltage, and save with "Details added successfully" confirmation.
- Values appear in reports with date and time. The option is inactive during the OFF state of system selection switch.



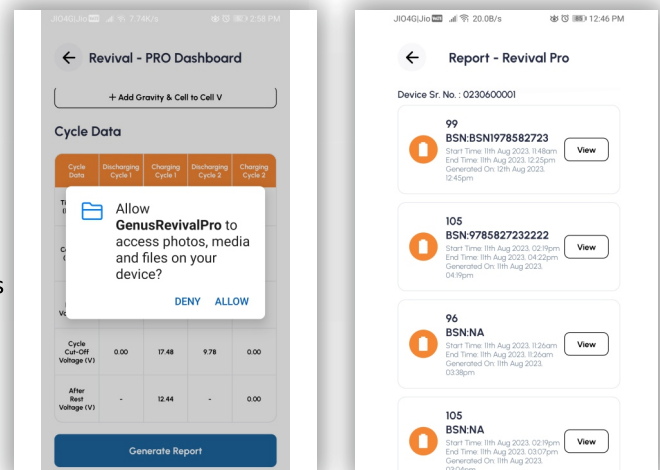
Cycle Data:

- View summary information for the selected profile.
- Discharger cycle display parameters: time taken, initial battery voltage, cycle cut-off voltage.
- Charger cycle display parameters: time taken, unit consumption, initial battery voltage, cycle cut-off voltage, and after-rest voltage.

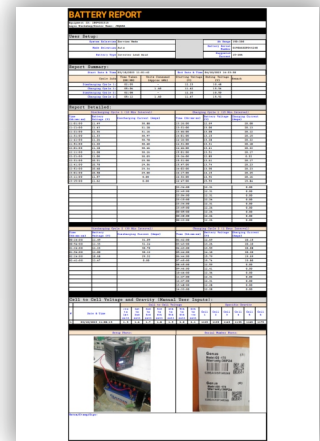
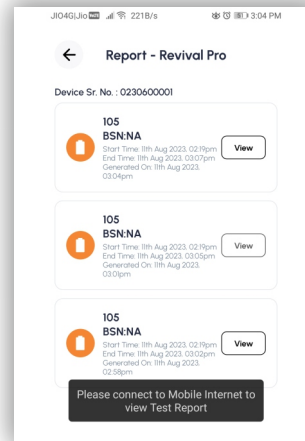


Generate Report:

- Highlight the "Generate Report" tab to create a report for the current profile.
- Allow access to photos, media, and files on your device.
- Upon successful generation, the message "Report generated successfully" appears, and the Report— Revival Pro page opens.
- Tap the View tab next to the battery's serial number to access and download the generated report.
- If prompted to connect to the mobile Internet, disable Wi-Fi in mobile settings, return to the app, and tap View again.
- The report automatically downloads in PDF format.



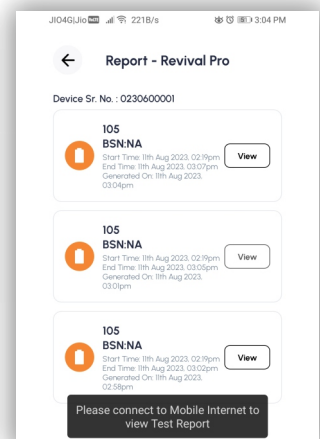
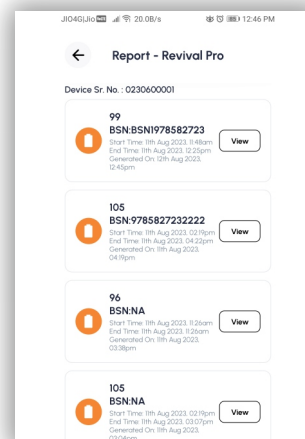
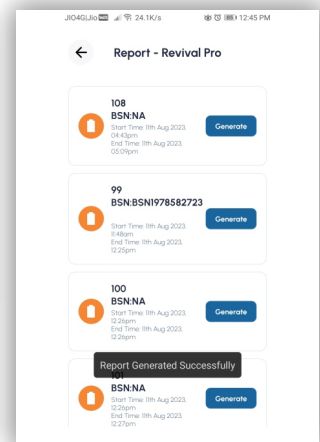
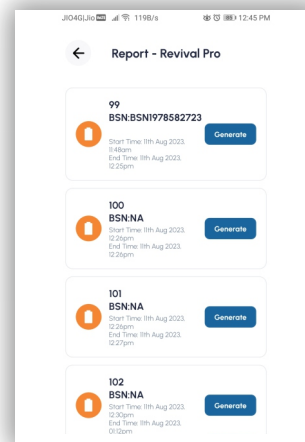
- Reports can be generated anytime with the system selection switch except in the OFF state and the mode selection switch in charge or discharge mode. In Auto mode, report generation is possible during charger cycle 2.



5. How to view (and download) the last 10 reports?

RevivalPro allows viewing and downloading the latest 10 profiles.

1. Connect the GenusRevivalPro app to the RevivalPro charger via Wi-Fi.
2. After a successful connection, the RevivalPro page displays connected devices.
3. Access Reports - RevivalPro page by tapping on the History tab of the connected device.
4. Each report includes Unique ID, Battery Serial Number, Start/End Date Time, and Generate Date Time.
5. Generate reports by tapping on the Generate tab, a success message appears on display.
6. Tap the View tab next to the battery serial number to view and download the generated report.
7. If prompted to connect to mobile internet, disable Wi-Fi in mobile settings, then reconnect in the app.
8. Tap the View tab again, the report downloads automatically in PDF format.



6. What details are in the generated Report?

Equipment ID

The report shows the ID of the RevivalPro charger discharger.

Login Workshop/Dealer Name

The Report shows the name of the workshop or dealer.

User Setup

The User Setup shows the details as given.

- The System Selection and Mode Selection switch position.
- Battery Type
- Selected Ah Range

- Battery Serial Number
- Suggested Current

Report Summary

The report summary shows the details as given.

- Start Date & Time
- End Date & Time
- The discharging Cycle shows each discharger cycle parameter value like time taken, Initial battery voltage, and cycle cut-off voltage.

- The charger cycle shows each charger cycle parameter value like time taken, Unit consumed, Initial battery voltage, cycle cut-off voltage, and after rest voltage.

- A remark column is also given for each cycle of charging and discharging.

Report Detailed

The report detail shows the parameter value for each cycle as given below.

- Discharging Cycle 1: Detailed report with 10-minute intervals, time, battery voltage, and discharging current.
- Charging Cycle 1: Detailed report with 15-minute intervals, time, battery voltage, and charging current.
- Discharging Cycle 2: Detailed report with 30-minute intervals, time, battery voltage, and discharging current.
- Charging Cycle 2: Detailed report with 1-hour intervals, time, battery voltage, and charging current.

Cell to Cell Voltage and Gravity (Manual User Inputs)

- Each user inputs data of gravity for each cell and cell-to-cell voltage shown in the section of Cell-to-Cell Voltage and Gravity with date & time.

Setup Photo

- Captured photos of the setup are also shown in the setup photo section.

Serial Number Photo

- Captured photos of the serial number are also shown in the serial number photo section.

Notes/Stamp/Sign

- At the end of the report Notes/Stamp/Sign section is given.

BATTERY REPORT									
Equipment ID: 28920316 Login Workshop/Dealer Name: JEDAMA									
User Setup:									
System Selection		Service Mode				Ab Range		150-200	
Mode Selection		Auto				Battery Serial Number		028EAKXSP046248	
Battery Type		Inverter Lead Acid				Suggested Current		15-20A	
Report Summary:									
Start Date & Time		03/10/2023 11:01:42			End Date & Time		04/10/2023 14:33:38		
Cycle Info		Time Taken (HH:MM)	Units Consumed (Approx. kWh)		Starting Voltage (V)		Ending Voltage (V)		Remark
Discharging Cycle 1:		02:05	-		12.23		10.48		
Charging Cycle 1:		05:06	1.60		11.62		15.96		
Discharging Cycle 2:		02:08	-		12.26		10.50		
Charging Cycle 2:		05:12	1.60		11.67		15.92		
Report Detailed:									
Discharging Cycle 1 (10 Min Interval)					Charging Cycle 1 (15 Min Interval)				
Time (hh:mm:ss)	Battery Voltage (V)	Discharging Current (Amps)			Time (hh:mm:ss)	Battery Voltage (V)	Charging Current (Amps)		
01:01:00	11.49	30.88			13:16:00	12.59	26.08		
01:11:00	11.43	31.28			13:31:00	13.60	28.13		
01:21:00	11.36	31.16			13:46:00	13.68	28.12		
01:31:00	11.33	30.97			14:01:00	13.15	28.15		
01:41:00	11.26	30.78			14:16:00	13.28	28.22		
01:51:00	11.20	30.40			14:31:00	13.31	28.18		
02:01:00	11.18	30.46			14:46:00	13.41	28.23		
02:11:00	11.08	30.26			15:01:00	13.51	28.17		
02:21:00	11.00	30.09			15:16:00	13.85	8.31		
02:31:00	10.91	29.90			15:31:00	13.91	28.17		
02:41:00	10.78	29.56			15:47:00	13.74	28.23		
02:51:00	10.68	29.34			16:02:00	13.90	28.23		
03:01:00	10.58	29.00			16:17:00	14.15	28.25		
03:11:00	11.57	0.00			16:32:00	14.32	28.18		
03:15:00	11.62	0.00			16:47:00	15.59	19.84		
					17:02:00	15.76	19.58		
					17:17:00	15.82	19.54		
					17:32:00	15.82	19.55		
					17:48:00	15.82	19.51		
					18:03:00	15.82	19.52		
					18:18:00	15.76	19.59		
					18:33:00	13.86	0.00		
					18:48:00	13.74	0.00		
					19:03:00	12.87	0.00		
					19:18:00	12.82	0.00		
					19:33:00	12.84	0.00		
					19:48:00	12.51	0.00		
					20:03:00	12.44	0.00		
					20:18:00	12.44	0.00		
					20:33:00	12.41	0.00		
					20:48:00	12.39	0.00		
					21:03:00	12.39	0.00		
					21:18:00	12.36	0.00		
					21:33:00	12.36	0.00		
					21:48:00	12.33	0.00		
					22:04:00	12.33	0.00		
					22:19:00	12.33	0.00		
					22:34:00	12.31	0.00		
					22:49:00	12.31	0.00		
					23:04:00	12.31	0.00		
					23:19:00	12.26	0.00		
					23:34:00	12.31	0.00		
					23:49:00	12.26	0.00		
					00:05:00	12.26	0.00		
					00:20:00	12.26	0.00		
					00:35:00	12.26	0.00		
					00:50:00	12.26	0.00		
					01:05:00	12.26	0.00		
					01:20:00	12.28	0.00		
					01:35:00	12.28	0.00		
Cell to Cell Voltage and Gravity (Manual User Inputs):									
Cell to Cell Voltage									
#	Date & Time	1st	2nd	3rd	4th	5th	6th	7th	8th
1	03/10/2023 11:08:15	1.5	1.6	1.7	1.8	1.9	2.0	2.1	2.2
Specific Gravity									
1	03/10/2023 11:08:15	1.5	1.6	1.7	1.8	1.9	2.0	2.1	2.2
Setup Photo:									
Serial Number Photo:									
Notes/Stamp/Sign:									

7. How to change the language?

The default selected language is English. If the user needs to change language in Hindi follow the below steps.

Step 1. Connect the GenusRevivalPro app to the RevivalPro charger via Wi-Fi.

Step 2. Tap the menu tab (=) on the REVIVALPRO page.

Step 3. Select the Hindi language by tapping on the HI tab, use the EN tab for English.

Step 4. Display shows Hindi language settings after tapping the HI tab.

